

### Features

- Programmable engineering units
- Programmable start date
- Interfaces to tipping bucket rain gauges and contact closures
- Real time operation
- $\pm 1$  minute/month time accuracy
- Miniature size
- Reusable
- User-friendly
- Low cost

### Applications

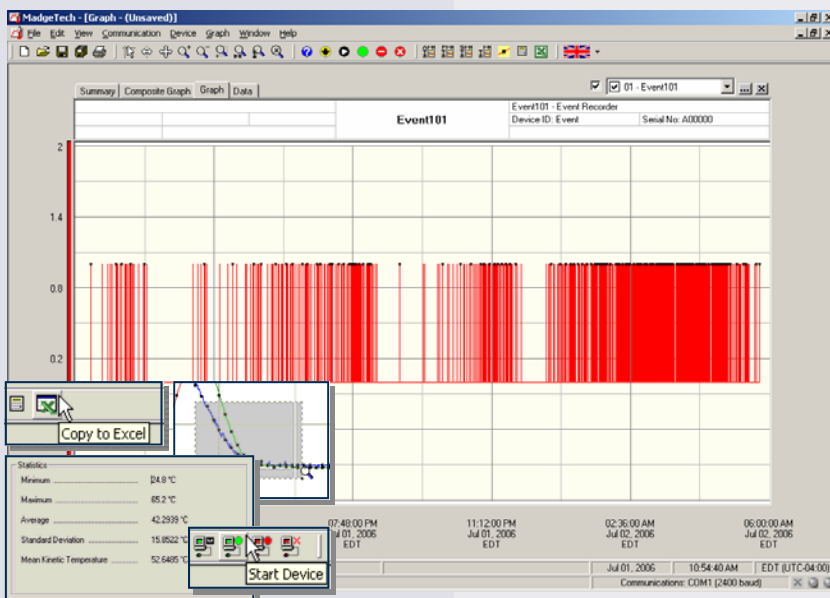
- Monitoring gas, water or electric meters
- Rainfall monitoring
- Contact closure monitoring
- Time studies
- Traffic studies
- Replace costly strip chart recorders



The Event101 records a time-stamped data point when an event takes place within a user defined reading interval. The reading interval can be set using the MadgeTech software to be from one second to twelve hours. When an event occurs on the input of the Event101, the date and time is recorded at the end of the reading interval. By only writing to memory when an actual event occurs on the input, the length of time the loggers can record to memory is maximized (13,107 events).

The Event101 can interface with many different sources such as contact closures and pulse output initiators. It has programmable engineering units, which gives the user the ability to scale the data collected into user defined units, such as inches of water. A common application for an event recorder is monitoring tipping bucket rain gauges. The event recorder will record the time when the bucket tips and the contact is closed, indicating a certain amount of rainfall.

The storage medium is non-volatile solid state memory, providing maximum data security even if the battery becomes discharged. Start and stop the data recorder directly from a computer and its small size allows it to fit almost anywhere.



### MadgeTech Data Recorder Software

displays event data in an easy to use graph.

The Windows<sup>®</sup>-based software package allows the user to effortlessly collect, display and analyze data. A variety of powerful tools allow you to examine, export, and print professional looking data with just a click of the mouse.

Click [MadgeTech Software](#) for more information or to download the software.

## EVENT101 SPECIFICATIONS\*

**Input Connection:** Removable screw terminal  
**Input Range:** 0 to 12VDC continuous; (0 to 30VDC peak)  
**Input Low:** <0.4V  
**Input High:** >2.7V  
**Internal Weak Pull-up:** <500µa  
**Recommended Duty Cycle for inputs greater than 12VDC (over 1 min. interval):** 18V: <50%  
24V: <25%  
30V: <10%  
**Input Impedance:** >1kΩ  
**Minimum Input Active (Low) Time:** 1 millisecond  
**Time Resolution:** 1 second (reading rate dependent)  
**Engineering Units:** User may define units up to 10 characters in length. This value is stored within the device.  
**Scale Factor:** User may program any desired scaling factor from ±1.000E-31 to ±9.999E+31. The scaling factor is stored within the device.  
**Offset Value:** User may program any desired offset value from ±1.0000E-31 to ±9.9999E+31. The factor is stored in the device.  
**Real Time Recording:** May be used with PC to monitor and record data in real time

**Memory:** 13,107 events; software configurable memory wrap  
**\*\*Reading Interval:** 1 reading every second to 1 every 12 hours  
**Start Modes:** Software programmable immediate start or delay start up to six months in advance  
**Visual Indicator:** LED flashes to indicate events  
**Battery Type:** 3.6V lithium battery included; **user replaceable**  
**Battery Life:** 1 year typical at 25°C  
**Data Format:** Date and time stamped events (true/false), user defined engineering units  
**Time Accuracy:** ±1 minute/month (at 20 °C, RS232 cable not in use)  
**Computer Interface:** PC serial or USB (interface cable required); 2,400 baud  
**Software:** Windows 95/98/ME/NT/2000/XP based software  
**Operating Environment:** -40 to +80°C, 0 to 95%RH non-condensing  
**Dimensions:** 1.4" x 2.5" x 0.6" (36mm x 64mm x 16mm)  
**Weight:** 0.9 oz (24 g)  
**Materials:** ABS plastic  
**Approvals:** CE  
**\*\*Device will record one event per user defined reading interval**

BATTERY WARNING: FIRE, EXPLOSION, AND SEVERE BURN HAZARD.  
DO NOT RECHARGE, DISASSEMBLE, HEAT ABOVE 212°F,  
INCINERATE OR EXPOSE CONTENTS TO WATER.

## SOFTWARE FEATURES

**Multiple Graphs:** Simultaneously analyze data from several units or deployments; easily switch to a single data series  
**Graphical Cursor:** One click displays readings by time, value, parameter or sample number  
**Data Table:** Instantly access tabular view for detailed dates, times, values, and annotations  
**Scaling Options:** Autoscale function fits data to the screen, or allows user to manually enter their own values  
**Formatting Options:** Change colors, line styles, plotting options, show or hide channels quickly  
**Statistics:** Calculate averages, min, max, standard deviation, and mean kinetic temperature with the touch of a button  
**Export Data:** Export data in a variety of common formats, or switch to Excel® with a single click  
**Calibration:** Automatically calculate and store calibration parameters  
**Logger Configuration:** Easy set up and launch of data loggers with immediate or delayed start, preferred sample rate, and device ID  
**Communications:** Automatically sets up communications port, or lets user select configuration

\*SPECIFICATIONS ARE SUBJECT TO CHANGE WITHOUT NOTICE.  
SPECIFIC WARRANTY AND REMEDY LIMITATIONS APPLY.  
CALL 1-603-456-2011 OR GO TO WWW.MADGETECH.COM FOR DETAILS.

## ORDERING INFORMATION

<u>Model</u>	<u>Description</u>	<u>Price (U.S.)</u>
EVENT101	Event Recorder	\$99.00
IFC110	Software, manual and RS232 interface cable	\$99.00
IFC200	Software, manual and USB interface cable	\$119.00
LTC-7PN	Replacement battery for Event101	\$10.00

For Quantity Discounts call 603-456-2011 or email [sales@madgetech.com](mailto:sales@madgetech.com)

### ASK ABOUT OUR OTHER DATA RECORDERS

Temperature	Pulse/Event/State
Humidity	Low Level Current
Pressure	Low Level Voltage
pH	RF Transmitters
Level	Intrinsically Safe
Shock	Spectral Vibration

